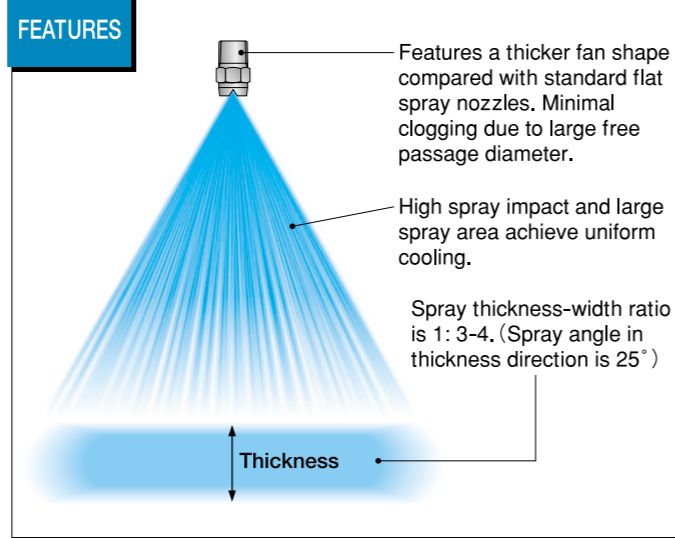


# WVVEP series Thick Flat Spray Nozzles with Even Distribution

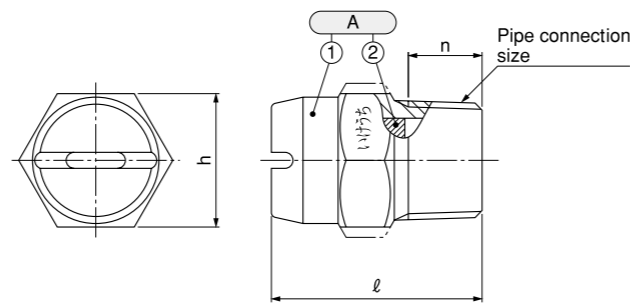
- Plate/Hot strip mill**
- Roll cooling
  - Cooling plates and steel sheets
  - Cooling casted steel



## WVVEP series

**MATERIALS** Brass (C3604) or S303

Series	Pipe connection size	Dimensions (mm)			Mass (g)	
		ℓ	n	h	B	S303
WVVEP	1/4M	25	9.5	14	23	21
	3/8M	30	10.5	19	40	37
	1/2M	38	14	23	70	65



Ⓐ Nozzle (① Nozzle body ② Deflector)

[Note] Appearance and dimensions may differ slightly depending on materials and nozzle codes.

## Performance Data

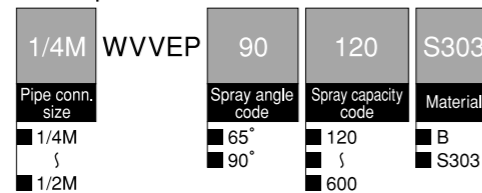
Spray angle code	Spray capacity code	Pipe connection size	Spray capacity (ℓ/min)								
			0.05 MPa	0.1 MPa	0.15 MPa	0.2 MPa	0.3 MPa	0.5 MPa	0.7 MPa	1 MPa	2 MPa
90°, 65°	120	1/4M	4.90	6.93	8.49	9.80	12.0	15.5	18.3	21.9	31.0
	140		5.72	8.08	9.90	11.4	14.0	18.1	21.4	25.6	36.1
	200		8.16	11.5	14.1	16.3	20.0	25.8	30.6	36.5	51.6
	260	3/8M	10.6	15.0	18.4	21.2	26.0	33.6	39.7	47.5	67.1
	300		12.2	17.3	21.2	24.5	30.0	38.7	45.8	54.8	77.5
	400		16.3	23.1	28.3	32.7	40.0	51.6	61.1	73.0	103
	500	1/2M	20.4	28.9	35.4	40.8	50.0	64.6	76.4	91.3	129
	600		24.5	34.6	42.4	49.0	60.0	77.5	91.7	110	155

Conversion of unit [Pressure] 0.1MPa ≅ 14.50psi [Flow rate] 1ℓ (liter) ≅ 0.264 US gal. 10psi ≅ 0.069MPa 1US gal. ≅ 3.79ℓ (liter)

## How to order

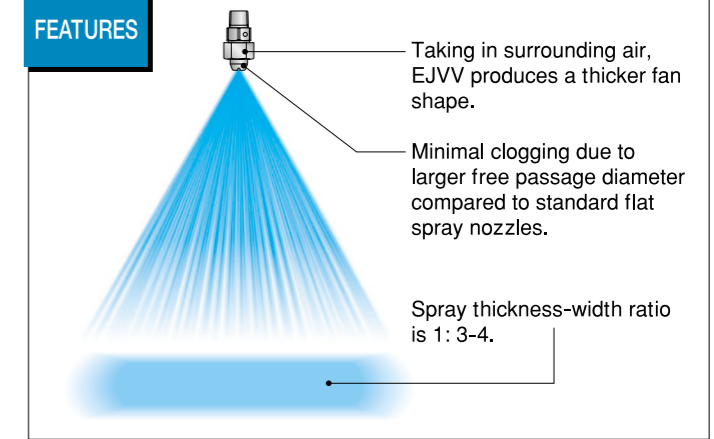
Please inquire or order for a specific nozzle using this coding system.

〈Example〉 1/4M WVVEP 90 120 S303



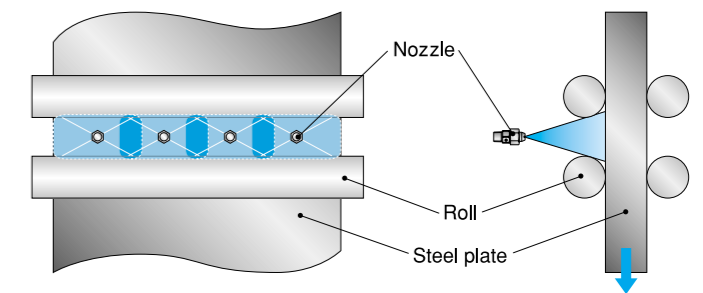
# EJVV series Air Mixing Type Flat Spray Nozzles

- Iron making process**
- Washing electric precipitator pole plates
- Rolling mill process**
- Cooling steel plates



## EJVV used in cooling steel plates

EJVV achieves uniform and effective cooling in the entire spray area with large thick spray.



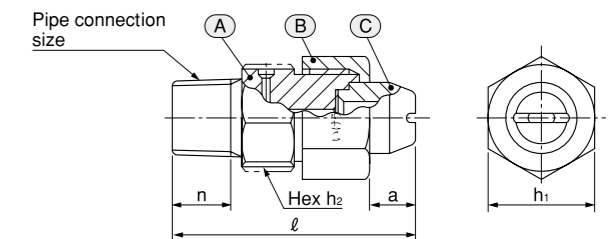
## EJVV series

**MATERIALS** Brass (C3604) or S303

**OPTIONAL MATERIAL:** S316 or others

Series	Pipe conn. size	Dimensions (mm)					Mass (g)	
		ℓ	h <sub>1</sub>	h <sub>2</sub>	a	n	B	S303
EJVV	1/4M	44.5	19	17	8	10.5	60	57

[Note] Appearance and dimensions may differ slightly depending on materials and nozzle codes.



Ⓐ Adaptor Ⓑ Cap Ⓒ Spray tip

## Performance Data

Spray angle code	Spray capacity code	Pipe connection size	Spray angle		Spray capacity (ℓ/min)						Mean droplet diameter (μm)	Free passage diameter (mm)		
			0.3 MPa	0.7 MPa	0.25 MPa	0.3 MPa	0.5 MPa	0.7 MPa	1 MPa	2 MPa				
90°	20	1/4M	90°	90°	1.83	2.00	2.58	3.06	3.65	5.16	320	0.9		
	30		90°	90°	2.74	3.00	3.87	4.58	5.48	7.75	320	1.1		
	40		90°	90°	3.65	4.00	5.16	6.11	7.30	10.3	320	1.2		
	50		90°	90°	4.56	5.00	6.45	7.64	9.13	12.9	320	1.3		
	60		90°	90°	5.78	6.00	7.75	9.17	11.0	15.5	420	1.5		
	80		90°	90°	7.30	8.00	10.3	12.2	14.6	20.7	420	1.7		
	100		90°	90°	9.13	10.0	12.9	15.3	18.3	25.8	590	2.0		
	120		90°	90°	11.0	12.0	15.5	18.3	21.9	31.0	590	2.2		
	80°		20	1/4M	80°	80°	1.83	2.00	2.58	3.06	3.65	5.16	320	0.9
			30		80°	80°	2.74	3.00	3.87	4.58	5.48	7.75	320	1.1
40		80°	80°		3.65	4.00	5.16	6.11	7.30	10.3	320	1.3		
50		80°	80°		4.56	5.00	6.45	7.64	9.13	12.9	320	1.5		
60		80°	80°		5.78	6.00	7.75	9.17	11.0	15.5	430	1.7		
80		80°	80°		7.30	8.00	10.3	12.2	14.6	20.7	430	1.9		
100		80°	80°		9.13	10.0	12.9	15.3	18.3	25.8	590	2.2		
120		80°	80°		11.0	12.0	15.5	18.3	21.9	31.0	590	2.6		

\*Please use EJVV at pressure over 0.25MPa.

Conversion of unit [Pressure] 0.1MPa ≅ 14.50psi [Flow rate] 1ℓ (liter) ≅ 0.264 US gal. 10psi ≅ 0.069MPa 1US gal. ≅ 3.79ℓ (liter)

## How to order

Please inquire or order for a specific nozzle using this coding system.

〈Example〉 1/4MEJVV 90 20 B

